

FED. ROAD DIV. No.	STATE	PROJECT No.	FISCAL YEAR	SHEET No.
3	FLA.			1
STATE JOB NO. 89503-2601				

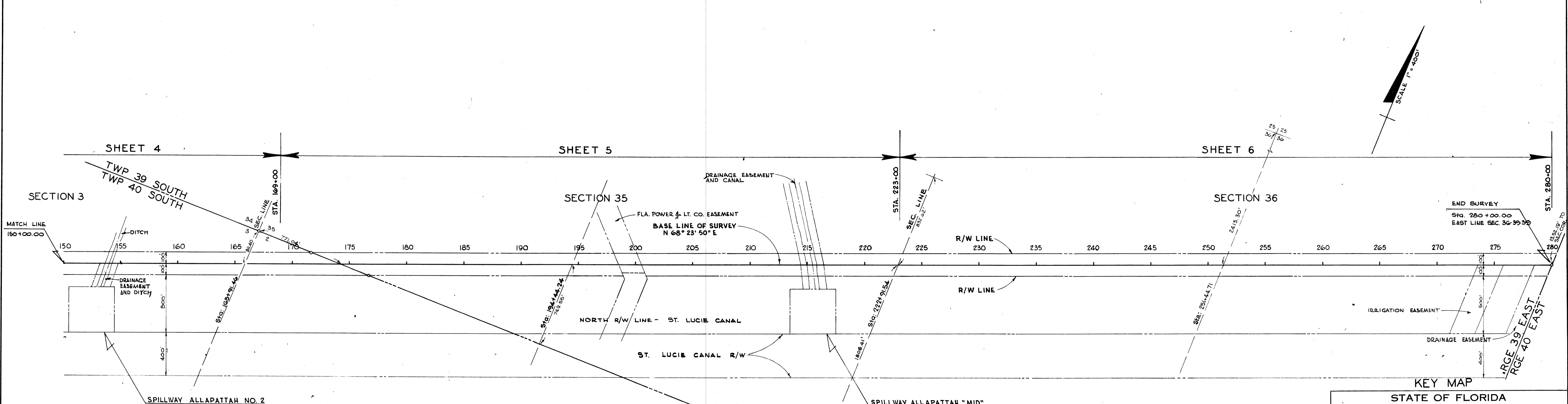
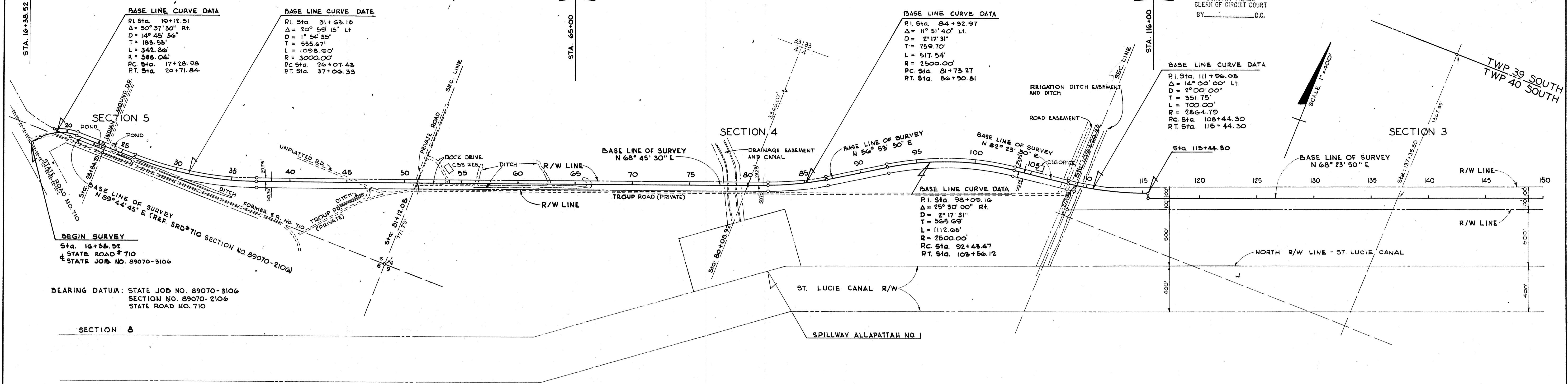
'67 NOV 14 PM 3: 12

DOROTHY PIERCE
CLERK OF CIRCUIT COURT
BY _____ D.C.

SHEET 2

SHEET 3

SHEET 4



KEY MAP

STATE OF FLORIDA
STATE ROAD DEPARTMENT

LOCATION MAP

STATE ROAD NO. CITRUS BOULEVARD (MARTIN COUNTY)

BY	DATE	APPROVED BY	DATE
RG & PH	FEB. 1966	<i>Charles J. ...</i>	3-2-66

GREENLEES, ARBOGAST & MONTGOMERY, INC.
Engineers
Arthur Dehon Building
STUART, FLORIDA

SECTION. 89503-2601 SHEET 1 OF

We, John W. Cashins, as Executive Director of the State Road Department of the State of Florida, and F.K. Strickland as Secretary of the State Road Department of the State of Florida, do hereby certify that this map is the Official Map of Location and Survey of a portion of Section 89503 in Martin County, Florida; said portion of Section 89503 extending from State Road 710 Northeastly to the East line of Section 36, Township 39 South, Range 39 East.

Prepared and adopted by the State Road Department of the State of Florida under provisions of Section 335.02, Florida Statutes of 1955.

John W. Cashins
Executive Director, State Road Department

Attest: *F.K. Strickland*
Secretary, State Road Department

Approved: *[Signature]*
Engineer at Rights of Way

Filed for record in the Office of the Clerk of the Circuit Court for the County of Martin, State of Florida, in Map Book 4, Page 61, on the 14th day of November, A.D. 1966.

Dorothy Pierce
Clerk of the Circuit Court
Martin County, Florida

Date: August 13, 1966

GREENLEES, ARBOGAST & MONTGOMERY, INC.
Engineers
Arthur Dehon Building
STUART, FLORIDA